

NOW IS THE TIME

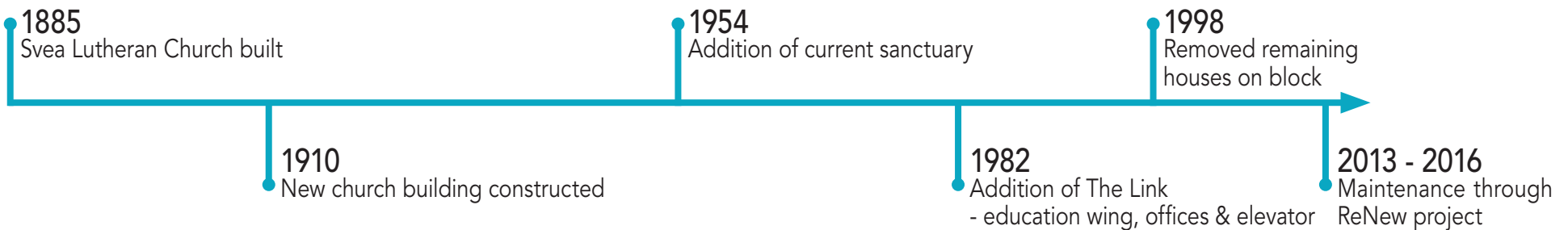


In 1885 a small group of recent immigrants wanted to make sure that the story of God's love was told throughout this community. They said, "Now is the time!" and pooled their meager resources to purchase Calvary's first church building, called Svea. Again in 1910, Calvary said, "Now is the time!" and again built a brand-new church building to make room for that growing congregation. And, believe it or not, again in both 1954 and 1982, Calvary said, "Now is the time!" and modernized our church, built a new sanctuary, education wing, elevator and offices to better serve our community.

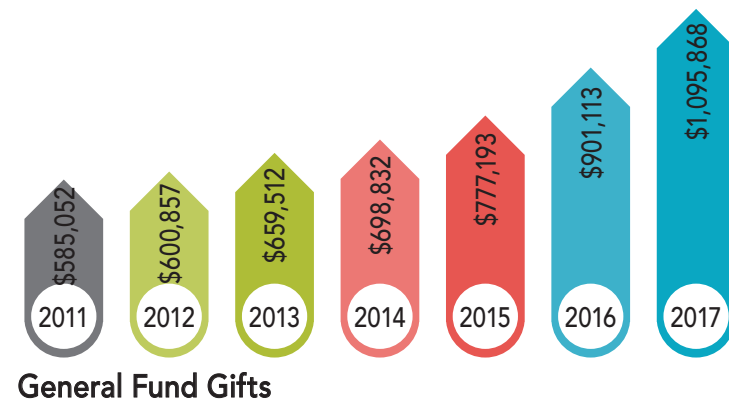
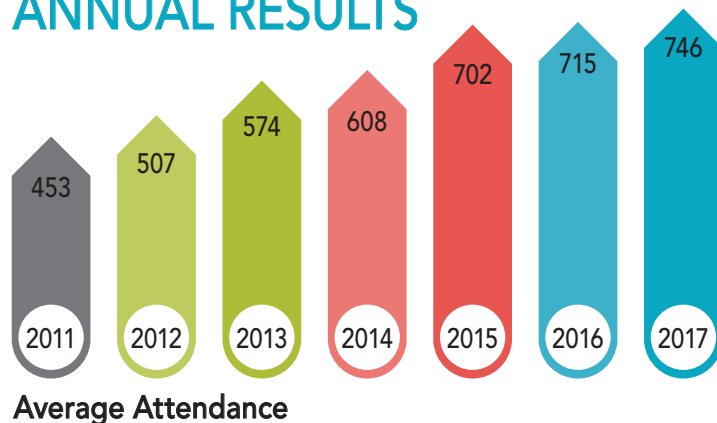
Again and again, throughout Calvary's history, the people of have recognized the need to expand, modernize and build in order to ensure something they believed to be absolutely critical: That Calvary provided a space where all are welcome and invited to hear the story of God's love for them!

Friends, we again wonder: Is God inviting us to say one more time: "Now is the time!"?

CALVARY BUILDING HISTORY



ANNUAL RESULTS



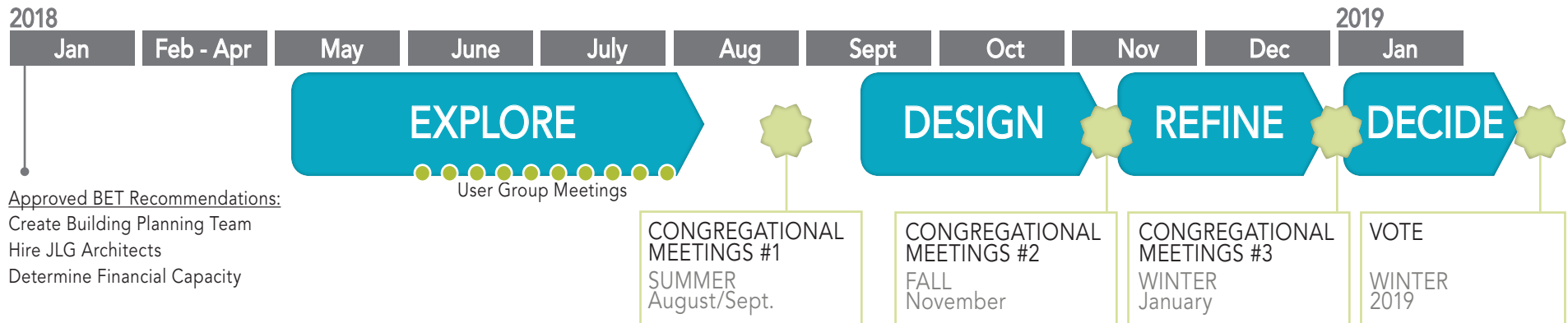
WHY IS “NOW THE TIME?”

Now is the time — we are positioned for continued growth and need to continue the community of faith we’ve built for the next generations.

The result of the Building Exploration Team’s year-long study — which was approved in January 2018 — recommends we address the following:

- 1) **Deferred Maintenance and Accessibility:** Spaces that are accessible for all, fire safety, elevator repairs, water leaks, comfortable temperatures, and convenient restrooms are just a few of the issues needing to be addressed with this project.
- 2) **Worship Space:** Preserve our beautiful Sanctuary for formal worship and, to accommodate our growth and increasing preferences today for an informal style of worship, add a new second worship space designed specifically for informal worship with multi-purpose flexibility.
- 3) **Connect Space:** Create a welcoming space or “Hub” for people to naturally connect before and after worship and other gatherings, and enjoy a hospitality area.
- 4) **Serve Space:** Improve Service work areas with flexibility and adequate, designated storage areas. This also includes a well-designed, safe Preschool to support children and young families; and staff offices that are centrally located.

PROJECT SCHEDULE



SITE PLAN

1 Worship/Multi-Purpose/ Hub Addition

- 9,200 SF New Space

2 Courtyard Space Infill

- 1,200 SF New Space
- Preschool Classroom (see plan)
- Large Public Toilets (see plan)

3 Vehicle Drop-Off

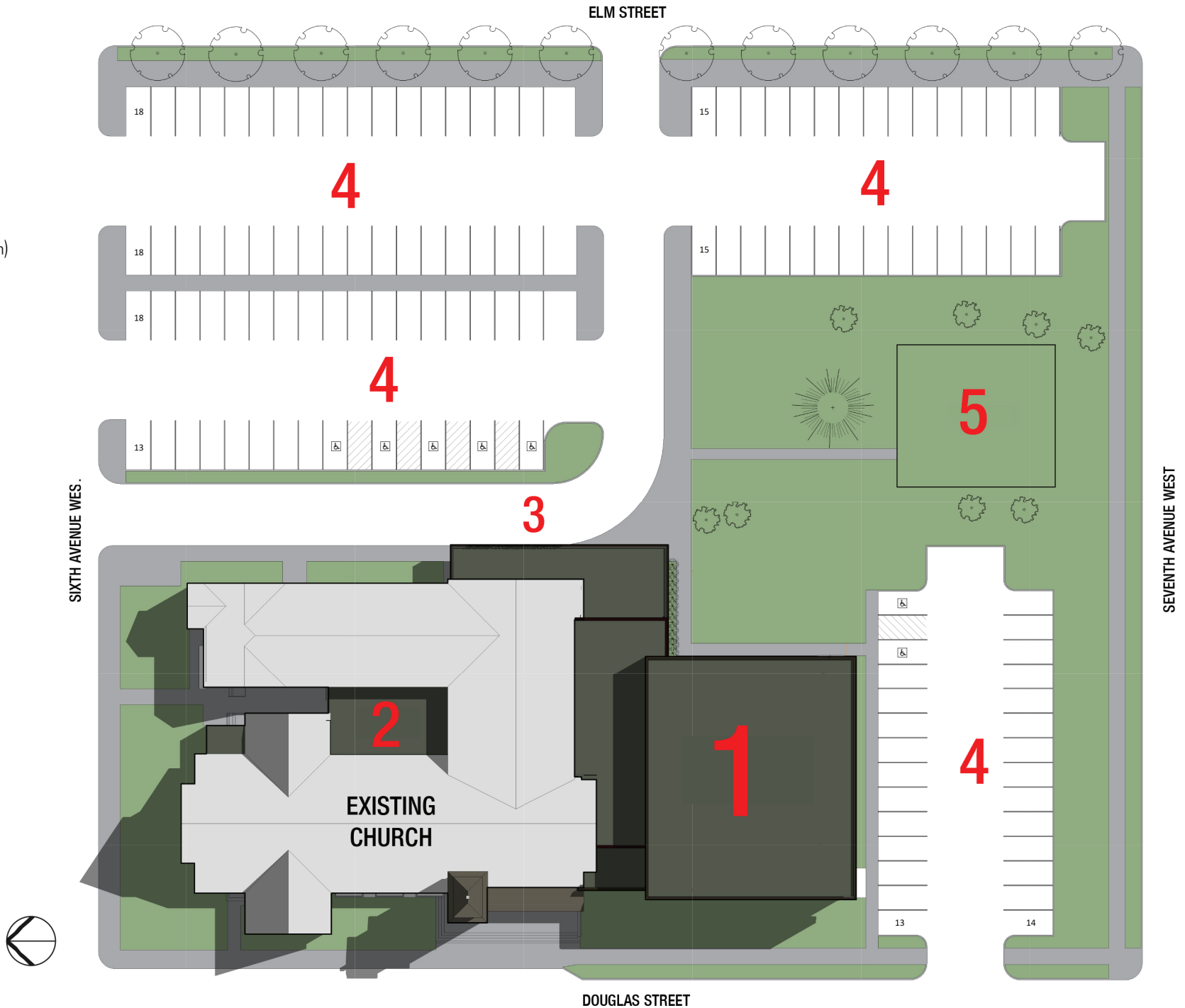
- New Accessible Building Entry
- Curb Parking for Three Cars
- Canopy Coverage to Curb

4 Off Street Parking

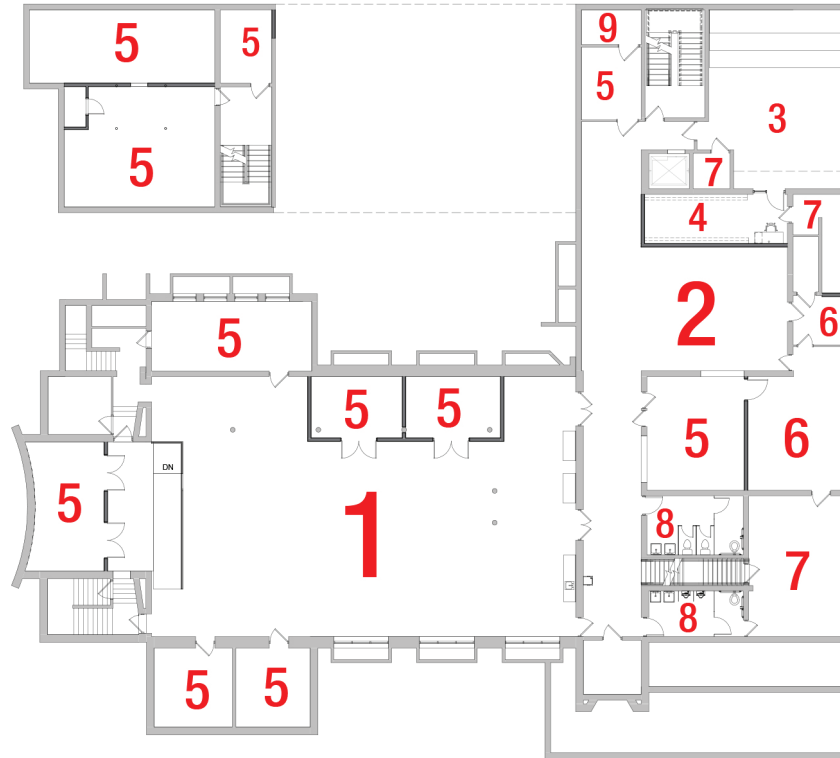
- Parking Increased from 88 Stalls to 124

5 Existing Playground

- Playground Space to Remain without Modifications



LOWER LEVEL PLAN



1 Service Center/Multi-Purpose

- Host Large Service Events
- Adjacent Storage for Multiple Space User Groups
- Host Larger Groups/Meetings

2 Lower Level Hub

- Lower Level Gathering Area
- Wayfinding and Circulation
- Soft Seating

3 Music Room

- HVAC Upgrades

4 Music Room Support Space

- Storage for Sheet Music and Robes
- Desk for staff

5 Storage Space

6 Facilities Management Space

7 Building Services Space

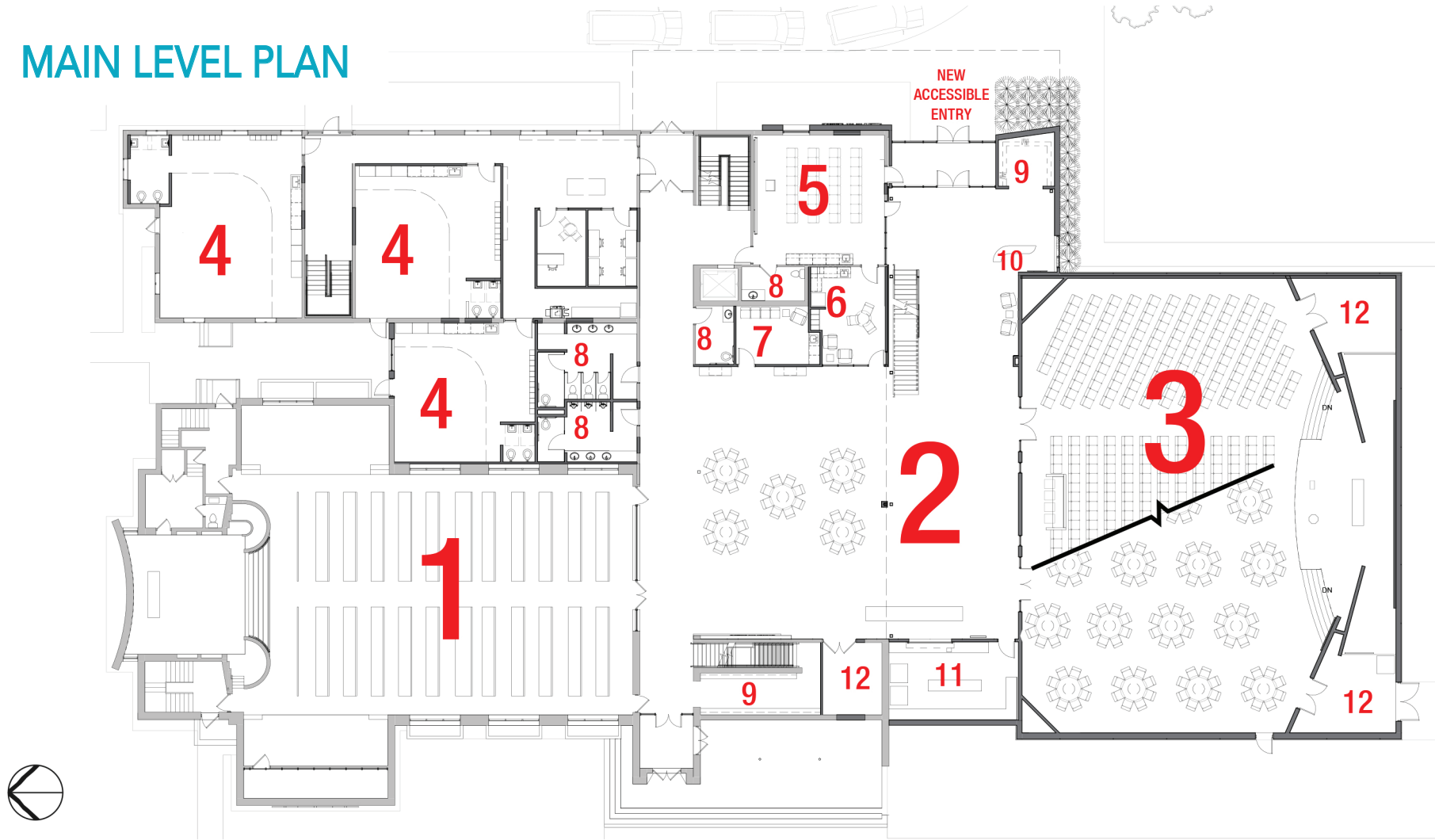
- Building Heating and Cooling Equip.
- Building Electrical Services

8 Toilet Rooms

- Upgrade/Remodel to Meet Accessibility Requirements

9 Elevator Machine Room

MAIN LEVEL PLAN



1 Existing Sanctuary

- HVAC Upgrades
- Acoustic Upgrades

2 Connecting Hub

- Welcome Center
- Coffee Bar/Serving Area
- Table Seating/Soft Seating
- Multi-Purpose Space

3 Worship Space/Multi-Purpose

- Chair Seating for 450
- Table Seating for 225
- Host Wedding Receptions, Lunches, Dinners, Community Events, Service Activities

4 Preschool Classroom/Multi-Purpose

- M-F Preschool Services
- Weekend Children's Ministry

5 Multi-Purpose Meeting Room

- Up to 32 Person Capacity
- Buffet Counter with Sink
- Host Community Groups, Bride Room, Chapel
- Secure Entry from Vestibule
- Access to Toilet Room and Hospitality Room

6 Hospitality Room

- Supports Event Volunteers
- Lockers, Kitchenette for Volunteers
- Soft Seating/Table Seating
- Weekend/Evening Meeting Space

7 Mother's Room/Small Meeting Space

- Nursing/Lactation Area with Sink, Counter & Fridge
- Small Meeting or Counseling Room

8 Toilet Room(s)

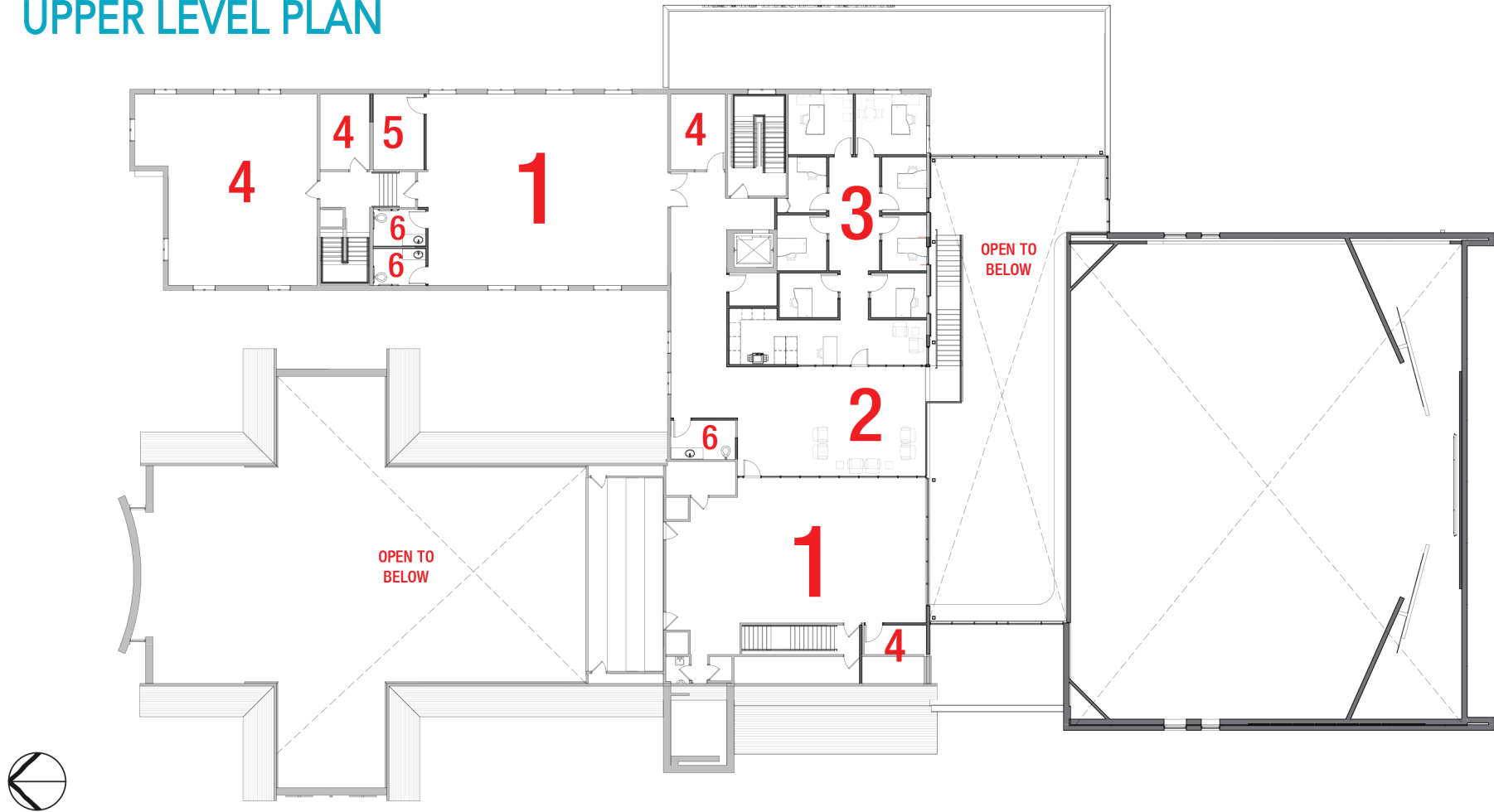
9 Coat Area

10 Welcome Desk

11 Fully Equipped Kitchen

12 Storage

UPPER LEVEL PLAN



1 Multi-Purpose Room

- Children and Youth Ministry Programming
- Host Large Meetings
- Preschool Programming (at Preschool Wing) M-F

2 Upper Hub

- Overlooks Main Level Hub
- Soft Seating
- Wayfinding and Circulation

3 Administration Suite

- Overlooks Main Level Hub
- Enclosed Offices for 8 Staff
- Reception Work Station
- Storage, Data Service, Open Work Space

4 Storage

5 Sensory Room

- Sensory Room for Preschool Students
- Or Youth with Special Needs or Behavioral Concerns

6 Toilet Rooms

EXTERIOR ENTRY PERSPECTIVE



EXTERIOR BIRD'S EYE PERSPECTIVE



INTERIOR HUB PERSPECTIVE



WANT TO LEARN MORE?

Website — Calvary's website has a dedicated up-to-date page for project information and key dates at www.calvaryalex.org/resources/building-project. You can fill out a feedback form online or email the BPT at building@calvaryalex.org.

Video Screen in Narthex/Gathering Area — Stop and watch for more information about the project.

Upcoming Meetings — Join us in January 2019 for the next version of drawings and more information on the proposed project.

Church Office — If you don't have access to the internet, we are happy to help provide what you need by calling or stopping by the church office.

Building Planning Team Members — Ask any one of us and we're happy to discuss the project.

BUILDING EXPLORATION TEAM

To identify the current facility needs and explore the future needs of Calvary's building.

Dave Ahlquist, Chair	Clint Bachmann
Miriam Svobodny	Katie Rentschler
Mary Griffin	Pastor Hans Dahl
Rich Rentz	
Todd Emmons	
Craig Andrews	
Alicia Bertram	

BUILDING PLANNING TEAM

To create a realistic building plan that addresses Calvary's future needs so we can live out God's mission and vision for Calvary.

Miriam Svobodny, Co-Chair	Cory Hodgson
Alicia Bertram, Co-Chair	Elaine Larson
Tom Jacobson	Lowell Einerson
Jay Sieling	Katie Rentschler
Marlene Thompson	Pastor Hans Dahl
Matt Anderson	

FINANCIAL FEASIBILITY TEAM

To identify our financial capacity for such a building project and recommend an appeal process that allows us to be stewards of the long-term financial health of Calvary.

Brent Iserman, Chair	Mike Steidl
Mark Watkins	Mike Svobodny
Jim Eidsvold	David Kjos
Rick Paulsen	
Bruce Luehmann	
Katie Rentschler	
Pastor Hans Dahl	

COUNCIL

To ensure that Calvary is fully staffed and operationally sound.

Sarah Suchy, President	Deb Moorman
Marc Sugden	Brooke Zabel
Bonnie Schnell	Tyler Geyen
Bruce Luehmann	Jana Berndt
Dave Ahlquist	Mike Svobodny
Jennifer Rentz	Katie Rentschler
Deb Dittberner	Pastor Hans Dahl
Brent Iserman	

COMMON QUESTIONS

Your feedback has shaped this project and is incorporated into the drawings. Please continue to use any of the resources specified to give your feedback. Below are questions we've heard along with responses.

What is the total project cost?

This is yet to be determined. Congregational input will help set the scope of the project and the Financial Feasibility Team believes our capacity is around a \$4.5 million dollar budget for remodeling (including deferred maintenance) and expansion (including all furnishings and technology). The final scope of the project will depend on the dollars pledged.

What is the right size of expansion?

The size and scope of the project will ultimately depend on congregational funding capacity and approval. We will have to prioritize; however, we believe that renovated and new space will allow Calvary to not only serve members better but that it also lets us serve more effectively in our community.

Will worship happen in both the existing sanctuary and new worship space?

The main function in both spaces is worship, though the new additional space for worship will have multipurpose flexibility and be used for many other functions besides worship.

Multipurpose usage is key to the design of all spaces. While certain spaces may be primarily designated for a certain activity on a specific day/time slot, we see many areas in the concept plans that will be scheduled and used for varied functions throughout the week.

What will happen to the existing sanctuary?

We will preserve the aesthetic qualities of the beautiful sanctuary. We have begun to discuss modifications and more planning needs to be done. We do anticipate keeping the pews, illuminating stained glass windows where the conceptualized new preschool wall will block outdoor light, replacing flooring where needed, improving lighting for better visibility for all, bringing the altar forward to be more useable in services and improved ventilation to enhance care of the organ. Again, these are options being considered.

What will the kitchen be like?

The new planned kitchen has full equipment and functionality. While we can't anticipate the long-term uses for this space, the concept allows for the events currently in place to be efficiently accomplished. We believe that placement on the main level, near the hub of activity and tables/seating areas not only on Sundays, but for special events, is a sound decision. This central location of a modern kitchen will provide better flow, comfort, and accessibility for all.

How will I vote in the approval process?

Our constitution dictates a process for a vote by members. The vote will take place at a congregation meeting with a date to be determined based on concept readiness. We know that it will not be possible for everyone to attend the one date selected, but we are committed to ensuring that everyone has an equal opportunity to review the information about the project proposal in advance of the meeting.

What are we seeking to accomplish?

To provide additional space for more effective, comprehensive ministry to members and the community and to live out our mission to Worship, Connect and Serve while supporting the ministries that are currently in place.

Why do we need two sanctuaries?

Our current beautiful sanctuary is well-suited to formal worship and will be preserved. A growing desire for an informal style of worship can be better fulfilled in a second more modern multi-purpose worship space. Flexible furnishings will make the new space appropriate for various activities and events and two worship centers would allow concurrent worship services.

Where can I find all the current information and updates about the project?

The looping video in the narthex outside the sanctuary will be refreshed with new information and printed copies of materials will be available in the church office upon request. Communications will be sent directly to members when needed. Information is posted to www.calvaryalex.org/resources/building-project and updated often.

When will I have the opportunity to offer input?

Congregational forums in August & September shared information and revealed initial concept drawings of the design and gathered feedback. JLG Architects has scaled the concept plans and will present at four congregational forums in November for congregational review, input and questions.

After November, the architects & BPT will further refine the design and provide another opportunity for feedback in January at congregational forums. The congregation will be asked to vote on both the design and the start of a fundraising appeal. Members are encouraged to participate at all these points.

What is the timeline for the project?

The remainder of 2018 will consist of listening and plan development in order for the congregation to vote on a set of plans and the start of a fundraising appeal. If approved, we anticipate that 2019 will be spent focused on fully developing the plans and starting the fundraising appeal. Construction could potentially begin as early as 2020.

Why are we looking at updating and expanding our facility instead of spending on other ministries?

Since 2011, worship attendance has grown by 78%. If this rate of growth continues, it is possible that in five years there could be 1,200 worshippers every week at Calvary. Through an expanded facility Calvary will be able to welcome more worshippers and continue to serve and give to ministries outside of our membership.

How do we know that Calvary can afford this project?

The Financial Feasibility Team has been formed to help identify the capacity and the boundaries for the project. Their study of Calvary's financial history and projections for future growth indicate that the project can be afforded. Calvary has seen a budget surplus for several years, has almost \$200,000 in reserve, and has no debt.

How much money will the project cost? Will there be debt?

The Financial Feasibility Team's goal is to maintain a high level of responsibility and stewardship of resources so that Calvary remains financially secure. The Financial Feasibility Team is projecting the project capacity to be at \$4.5 million, and believes that it can be achieved without long-term debt.

How will fundraising be done? When? Over how long a period?

The Financial Feasibility Team will share more information about their guidelines for funding the project at the November congregational forums. At this time, the intent is to conduct a five year appeal so that the project is conducted without long-term debt. The congregation will be asked to vote on the start of a broad fundraising appeal in 2019. If approved, the formal appeal would likely begin later in 2019.

How will a building project affect regular, on-going activities?

This is unknown until the project reaches further development, but the goal will be to disrupt worship and other activities as little as possible.

Who are the decision makers?

Several teams of people have been working to get to this point.

- *The 2017 Building Exploration Team* identified the current needs and explored future needs for Calvary's building.
- *The Building Planning Team* is guiding a realistic building plan that addresses Calvary's future needs so we can live out God's mission and vision for Calvary.
- *The Financial Feasibility Team* is working to identify our financial capacity, the financial requirements and boundaries needed for such a building project, educate the congregation to our financial position, and recommend an appeal process that accompanies a building project so that we can continue to be stewards of the long-term financial health of Calvary.
- *The Church Council's* role is to ensure that Calvary is fully staffed and operationally sound.

Ultimately, the Calvary congregation members are the decision makers.

How is initial JLG design project paid?

The ReNew project from 2013-2016 was focused on maintenance and improvement to the current structure, and raised over \$900,000 that was invested mostly in the infrastructure of the building. Through the ReNew project, the congregation elected to set aside \$38,000 to be used for future building exploration needs. The congregation voted to use that fund for the initial architectural fees to explore this remodel and expansion.

